



For Sale

\$665,000

BROULEE

5/44 TRAIN STREET

2  2  2 

'Train Street Central' Luxury Apartments

Train Street Central is a mixed-use development centrally located on the corner of Cambridge Crescent and Train Street.

Boasting the best surfing beaches, island reserves and protected marine sanctuaries, as well as 3 of the regions major schools, 2 early learning centres and an expanding retirement village, it is understandable why more and more people are making the sea-change and putting down roots on this pristine stretch of Coast.

Stage 2 residential offers luxurious 170 square meter, two-bedroom apartments with unparalleled light-filled living, creating the ideal environment for you to thrive. Thoughtfully planned spaces designed with quality appliances, stone benchtops and striking natural finishes. The residential units are all north facing with generous private balconies and double lock up garages with added storage. These apartments could be used for short term holiday letting, long term rental investments or as your new home.

The development will incorporate generous landscaped areas. This equates to 34% of the development being communal open spaces. We invite you to take advantage of this remarkable opportunity, and to get on board at Train Street Central.



Jessica Williams

0488 554 635



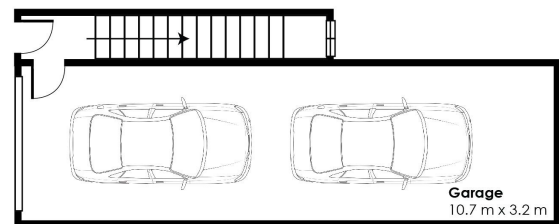
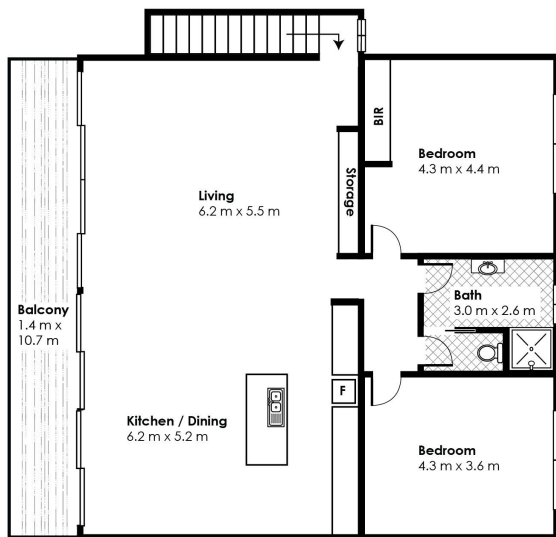
Pat Jameson

0405 442 905

Parking Spaces 118
Living Area 170sqm

Regional Airport 9.5kms
Beaches 600m
Post Office 1.8kms

Smart Car Charge Space
Generous Green Space



Disclaimer: Whilst the utmost care has been taken to document the measurements of the property, all dimensions are estimates only, and should not be relied upon for accuracy. All parties should make and rely upon their own enquiries for accuracy.

INTERNAL AREA : 170m²

BLACKSHAW

Train Street Residential

Plans provided are a guide only and may not be entirely accurate and not necessarily to scale. The information within this document has been obtained from reliable sources, however we do not guarantee its accuracy and persons should conduct their own enquires to verify any information contained herein. You must register your details with our sales representative. This information is used for security purposes. We may contact you with respect to this property or others which we believe may interest you. By providing this information you agree to its usage unless you advise us. Other than the circumstances allowed under the Privacy ACT 1988, we do not disclose information of this kind to other parties. All advice given by our sales representative is general advice and has not been prepared taking into account the individual circumstances of the person to whom it is given. All purchasers should seek the advice of an appropriately licensed person as to the suitability of any purchase of property and its suitability to them.

For all your sales and property management needs contact 4472 4758.